



Erster Test: Panasonic TV
mit 3D Polarisation

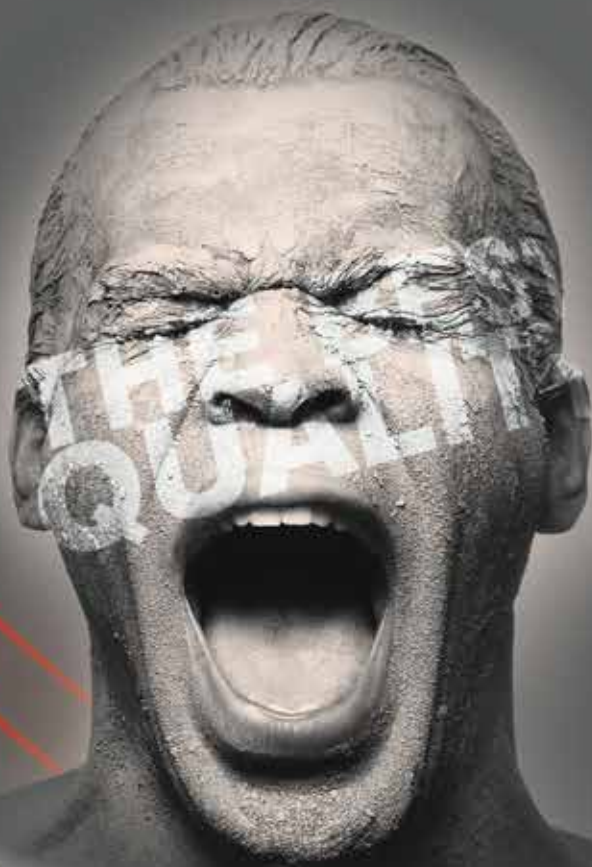


3D Blu-ray
Harmar

CD-Player
Marantz

Ohrhörer
Bowers & Wilkins

Fernseher



2/2014

Oehlbach Powerstation 909
HIGHLY RECOMMENDED



Oehlbach® XXL Powerstation 909 High-end plug socket system

av-magazin.de 2/2014

Evaluation of Oehlbach's Powerstation 909 high-end plug socket system

When it comes to signal transmission you will be hard pressed to find anyone that has more experience than cable specialist Oehlbach. Its new plug socket system promises a noise-free and reliable distribution of power for a home cinema and hifi setup. AV-Magazin subjected the Powerstation 909 to a critical practical test.

Functions and application

Oehlbach's Powerstation 909 is a multiple socket outlet in a classic hifi format. Its 44 cm wide metal body conceals far more technology than is evident at first glance. Underneath its cover works an armada of components that optimally process the power supply and protect the connected equipment from harmful voltage spikes and mains interference. But let's address one thing after the other. A thick IEC power cable, which is equipped with a solid safety plug, is used to supply mains power to the Powerstation 909. Eight Schuko sockets at the rear provide connections for audio and video equipment. These include special sockets which are equipped with customised mains filters to ensure optimum signal purity for analogue and digital equipment. As digital devices (such as CD players) respond differently to a mains power failure in comparison to analogue devices (such as turntables), Oehlbach has developed a special filtering technology that optimises the power supply according to the application. In practice, microwaves, dimmer switches, refrigerators and wireless networks can have an adverse effect on the in-house mains supply. The Powerstation 909 effectively enhances the quality of the signal thanks to its intelligent filter adaptation. Another practical feature is the surge protection element. A fuse protects the connected equipment from damage if harmful voltage spikes occur. A particularly clever function is the automatic switching of the two socket groups. Two buttons recessed in the front panel can be used to individually switch four of the eight rear Schuko sockets. This means devices such as a tube amplifier or TV hard disk recorder can remain connected to the mains supply, while a TV, Blu-ray and network player can be easily disconnected at the touch of a button. The integrated sheath current filter provides effective protection against harmful ground loops, which often occur when using a turntable. If required, the latter can be connected to the earth of the household mains supply via the earth connection on the device.

At the centre of the front panel is a small porthole window, which is used to display information. This can be used to show the mains voltage or the power consumption of all connected devices in watts. Underneath the liquid crystal display is the text „Polarity“, which is used for phase control. When it illuminates red it means the Schuko plug of the Powerstation 909 is connected correctly to the household mains in terms of its phase. If not, you will simply need to rotate the plug by 180 degrees. A switch-on delay for the power switch rounds off the opulent configuration of the unit. The Powerstation 909 scores highly in our practical test thanks to its firm-fitting contacts and ease of use. The plug socket system is also compelling in terms of sound. No noise can be heard from the speakers even when dimmer switches, wireless networks and microwaves are used. The stereo image is defined a little more precisely thanks to the simple phase control element. The digital filters create a touch more fine detail for high-definition audio formats such as FLAC and co, which really perfects the listening pleasure generated by a good audio chain.

Plain text

The high-end Powerstation 909 plug socket system is highly recommended for anyone wanting to get the most out of their hifi or home cinema system. Thanks to its additional functions such as surge protection, phase control, interference and mains filtering, Oehlbach's system creates a solid foundation for media enjoyment of the highest level.

